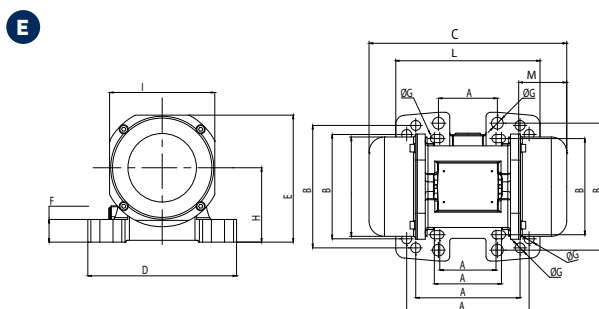
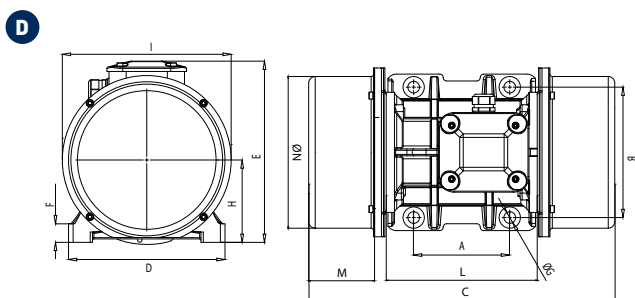
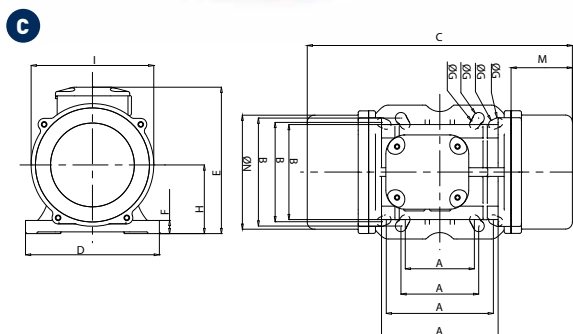
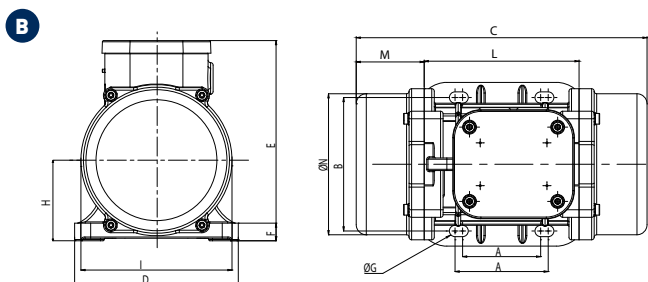
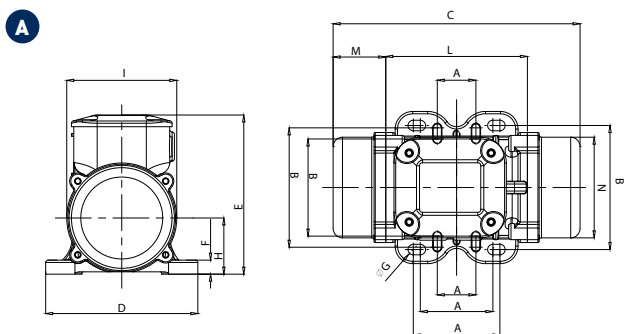




MVE - Electric vibrators - 2 pole single or 3 phase



OVERALL DIMENSIONS																																
3 PHASE		1 PHASE		Drawing	Size	c		m		a		b		Ø g		Holes	d		e		f		h		i		l		n		Weight	
50 / 60 Hz	U.S. Market 60 Hz	50 / 60 Hz	60/3M			mm	in	mm	in	mm	in	mm	in	mm	in		mm	in	mm	in	mm	in	mm	in	mm	in	mm	in	mm	in	mm	in
MVE 60/3	MVE 160/2	MVE 60/3M		A	10	211	8.31	45	1.77	62-74	2.44-2.91	106	4.17	9	0.35	4	130	5.12	136	5.35	12	0.47	48	1.89	94	3.70	121	4.76	85	3.35	4.2	9.3
MVE 100/3	MVE 220/2	MVE 100/3M		A	20	231	9.09	54	2.13	62-74	2.44-2.91	106	4.17	9	0.35	4	131	5.16	159	6.26	15	0.59	64	2.52	121	4.76	123	4.84	112	4.41	7.0	15.4
MVE 200/3	MVE 440/2	MVE 200/3M		B	23	218	8.58	53	2.09	62-74	2.44-2.91	106	4.17	9	0.35	4	164	6.46	140	5.51	25	0.98	82	3.23	116	4.57	159	6.26	110	4.33	7.2	15.9
MVE 300/3	MVE 690/2	-		C	30	253	9.96	45	1.77	65	2.56	140	5.51	13	0.51	4	154	6.06	175	6.89	15	0.59	79	3.11	142	5.59	163	6.42	131	5.16	9.8	21.6
MVE 400/3	MVE 890/2	-		C	30	273	10.75	55	2.17	80	3.15	110	4.33	11	0.43	4	154	6.06	175	6.89	15	0.59	79	3.11	142	5.59	163	6.42	131	5.16	10.3	22.7
MVE 500/3	MVE 1200/2	-		D	40	334	13.15	78	3.07	90	3.54	125	4.92	13	0.51	4	168	6.61	196	7.72	22	0.87	92	3.62	169	6.65	178	7.01	158	6.22	15.8	34.8
MVE 700/3	MVE 1700/2	-		D	40	334	13.15	78	3.07	124	4.88	110	4.33	11	0.43	4	168	6.61	196	7.72	22	0.87	92	3.62	169	6.65	178	7.01	158	6.22	16.5	36.4
MVE 800/3	MVE 1800/2	-		D	50	321	12.64	58	2.28	135	5.31	115	4.53	11	0.43	4	208	8.19	210	8.27	22	0.87	94	3.70	180	7.09	205	8.07	170	6.69	20.6	45.4

This information is furnished without warranty, representation, inducement or license of any kind. It is accurate to the best OLI knowledge or is obtained from sources believed to be accurate. OLI therefore assumes no legal responsibility.





MVE - Electric vibrators - 2 pole single or 3 phase

MVE 3 Phase

3 PHASE		MECHANICAL FEATURES								ELECTRIC FEATURES																		
		Working moment [*]				FC				Power				Current				Power Factor	Ia/In		ClassII Div.2	II 2D	Cable Type		Cable Gland			
		kg*cm		in*lb		kg		lb		kW		hp		A max (Y)		50Hz	60Hz		50Hz	60Hz			Type	U.S. Market Type				
		50Hz	60Hz	50Hz	60Hz	50Hz	60Hz	50Hz	60Hz	50Hz	60Hz	50Hz	60Hz	400V	460V			Temp. Class			Temp. Class	Class Temp.			AWG (SOW) Class Temp.	Class Temp.		
Type 50/60 Hz	U.S. Market 60 Hz	MVE 60/3	MVE 160/2	1.3	0.9	1.1	0.9	66	71	145.5	156.5	0.08	0.09	0.11	0.12	0.16	0.18	0.74	0.82	3	3	T4	100	4G1.5	18-4c	M16	80°C	80°C
MVE 100/3	MVE 220/2	1.9	1.3	1.7	1.1	98	95	216	209.4	0.1	0.11	0.13	0.15	0.19	0.18	0.76	0.85	3	3	T4	100	4G2.5	16-4c	M20	80°C	80°C		
MVE 200/3	MVE 440/2	3.7	2.6	3.2	2.3	187	189	412.3	416.7	0.18	0.21	0.24	0.28	0.35	0.35	0.78	0.87	3.3	3.30	T4	100							
MVE 202/3	MVE 444/2	3.7	2.6	3.2	2.3	187	189	412.3	416.7	0.18	0.21	0.24	0.28	0.35	0.35	0.78	0.87	3.3	3.30	T4	100							
MVE 300/3	MVE 690/2	6.4	4.5	5.5	3.9	321	323	708	712.1	0.27	0.28	0.36	0.38	0.52	0.45	0.84	0.89	3.60	3.50	T4	100							
MVE 400/3	MVE 890/2	7.9	5.7	6.9	4.9	407	411	897	906.1	0.30	0.36	0.40	0.48	0.58	0.60	0.88	0.88	3.50	3.50	T4	100							
MVE 500/3	MVE 1200/2	10.3	7.4	8.9	6.4	530	534	1168.4	1177.3	0.50	0.58	0.67	0.78	0.96	0.97	0.84	0.87	4.00	4.20	T4	100							
MVE 700/3	MVE 1700/2	14.9	10.6	12.9	9.2	758	765	1671.1	1686.5	0.66	0.75	0.89	1.01	1.25	1.24	0.83	0.88	4.30	5.00	T4	100							
MVE 800/3	MVE 1800/2	15.7	11.1	13.6	9.6	794	800	1750.5	1763.7	0.75	0.90	1.01	1.21	1.45	1.50	0.79	0.84	3.80	3.80	T4	100							

MVE Single Phase

50 Hz	60 Hz	MECHANICAL FEATURES								ELECTRIC FEATURES																	
		Working moment [*]				FC				POWER				CURRENT				CAPACITOR				ClassII Div.2	II 2D	Cable type		Cable gland	
		kg*cm		in*lb		kg		lb		kW		hp		A max				µF						Temp. Class	Temp. Class		Class
		50Hz	60Hz	50Hz	60Hz	50Hz	60Hz	50Hz	60Hz	50Hz	60Hz	50Hz	60Hz	230V	220V	115V	220V	220V	115V	Temp. Class	Temp. Class	Temp.	Class			Temp.	
MVE 60/3M	MVE 60/36M	MVE 160/2M	1.3	1.0	1.1	0.9	66	71	145.5	156.5	0.08	0.09	0.11	0.12	0.43	0.43	1.03	3	3	6.3	T4	100	4G1.5	18-4c	M16	80°C	80°C
MVE 100/3M	MVE 100/36M	MVE 220/2M	1.9	1.3	1.7	1.1	98	95	216.1	209.4	0.1	0.11	0.13	0.15	0.54	0.54	1.3	4	4	8	T4	100	4G2.5	16-4c	M20	80°C	80°C
MVE 200/3M	MVE 200/36M	MVE 440/2M	3.7	2.6	3.2	2.3	187	189	412.3	416.7	0.18	0.21	0.24	0.28	1.14	1.14	2.62	8	8	16	T4	100	4G2.5	16-4c	M20	80°C	80°C
MVE 202/3M	MVE 202/36M	MVE 444/2M	3.7	2.6	3.2	2.3	187	189	412.3	416.7	0.18	0.21	0.24	0.28	1.14	1.14	2.62	8	8	16	T4	100					
MVE 300/3M	MVE 300/36M	MVE 690/2M	6.4	4.4	5.5	3.9	321	323	707.7	712.1	0.27	0.28	0.36	0.38	1.58	1.58	3.43	12.5	12.5	25	T4	100					

MVE - ELECTRIC VIBRATORS - 2 POLE SINGLE OR 3 PHASE

APPLICATION	Hopper and silo - feeder - screen
POWDER	Fine - dry granular
PROBLEM SOLVING	Bridge and rat-holing
FEATURES	
DUTY CYCLE	Discontinuous - s1
FREQUENCY RANGE	From 20Hz to 60Hz [with inverter]
ENVIRONMENT TEMPERATURE	From -20°C to 40°C (from -4°F to 104°F)
MAX NOISE LEVEL	76 dB(a)
ATEX	II 3 D EX TD A22 TX IP 66
MATERIAL	Body aluminium - aluminium (powder painted) cover

OPTIONS

CAPACITOR	Available
ATEX	II 2 D EX T IIIC TX DB IP 66
CUSTOMIZED CABLE	Available

